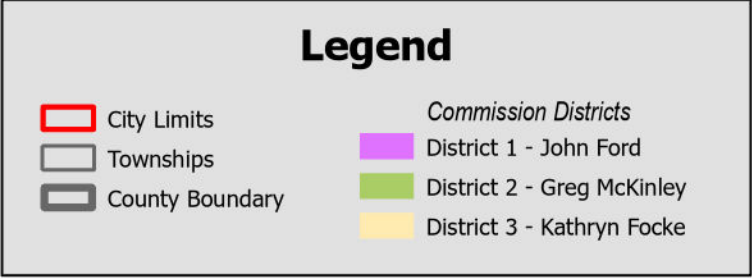
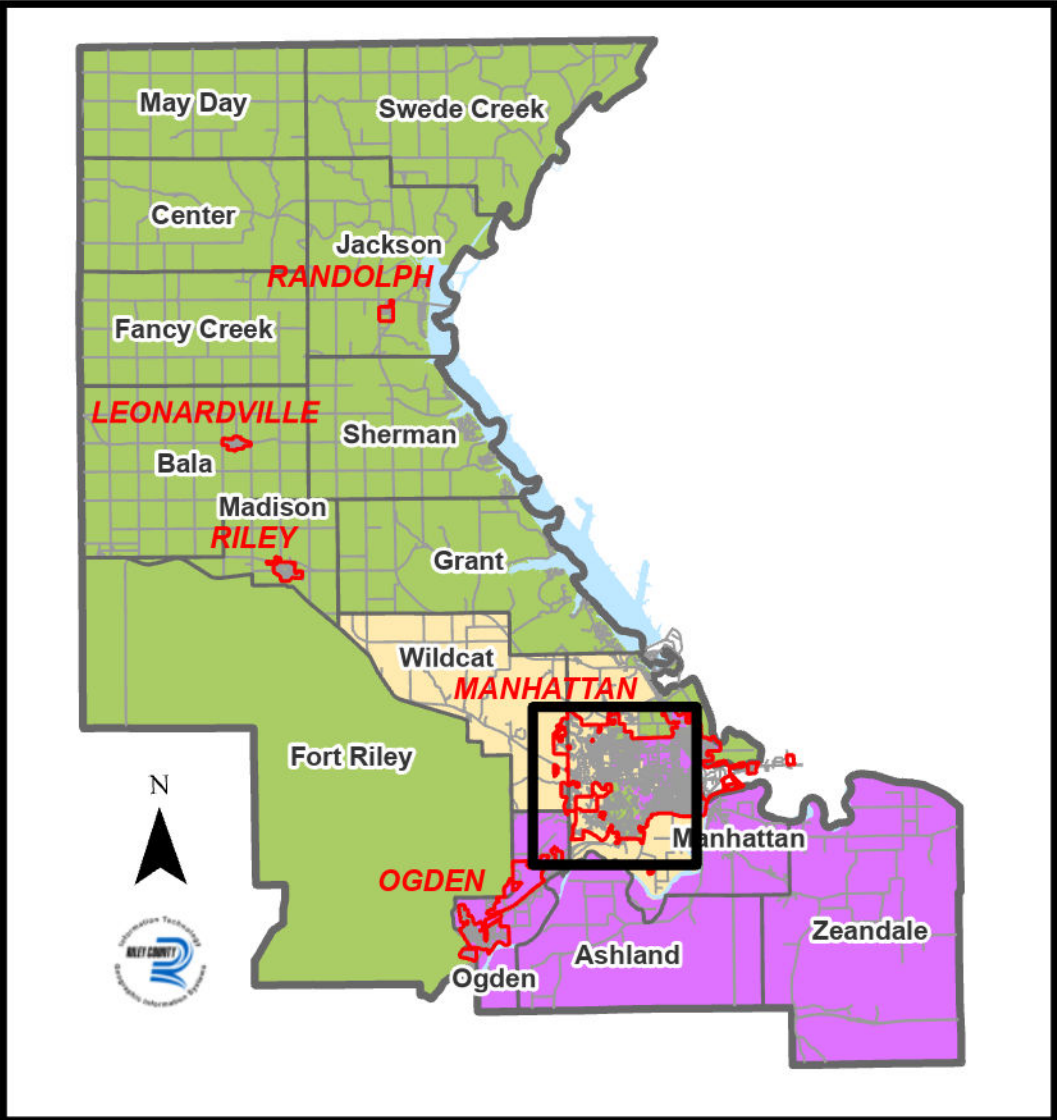


RILEY COUNTY COMMISSION DISTRICT #3



Riley County makes no representation of any kind, including, but not limited to, warranties of merchantability or fitness for a particular purpose or use, nor are any such warranties to be implied with respect to the information, data or services furnished herein.

In no event shall Riley County, nor its employees, officers or agents become liable to users of the data, information or services provided herein, or to any other party, for any loss or damage, consequential or otherwise, including but not limited to time, money or goodwill, arising from the use, operation or modification of the data or information, or for the failure to transmit a copy of any particular document. In using the information or data, users assume the risk for relying on such data or information, and further agree to indemnify, defend, and hold harmless Riley County, and its employees, officers and agents for any and all liability of any nature arising out of or resulting from the lack of accuracy or correctness of the information or data, or the use of the information or data. Further, in using this information or data the user acknowledges that the user is responsible for assessing the accuracy and reliability of the data or information provided, and that the images provided are copies, are subject to error and omission, and are not guaranteed or represented to be true, complete or correct.

No person, entity or user shall sell, give or receive for the purpose of selling or offering for sale, any portion of the information or data provided herein, nor may they use the information in a manner that is in violation of any federal, state or local law or regulation.

