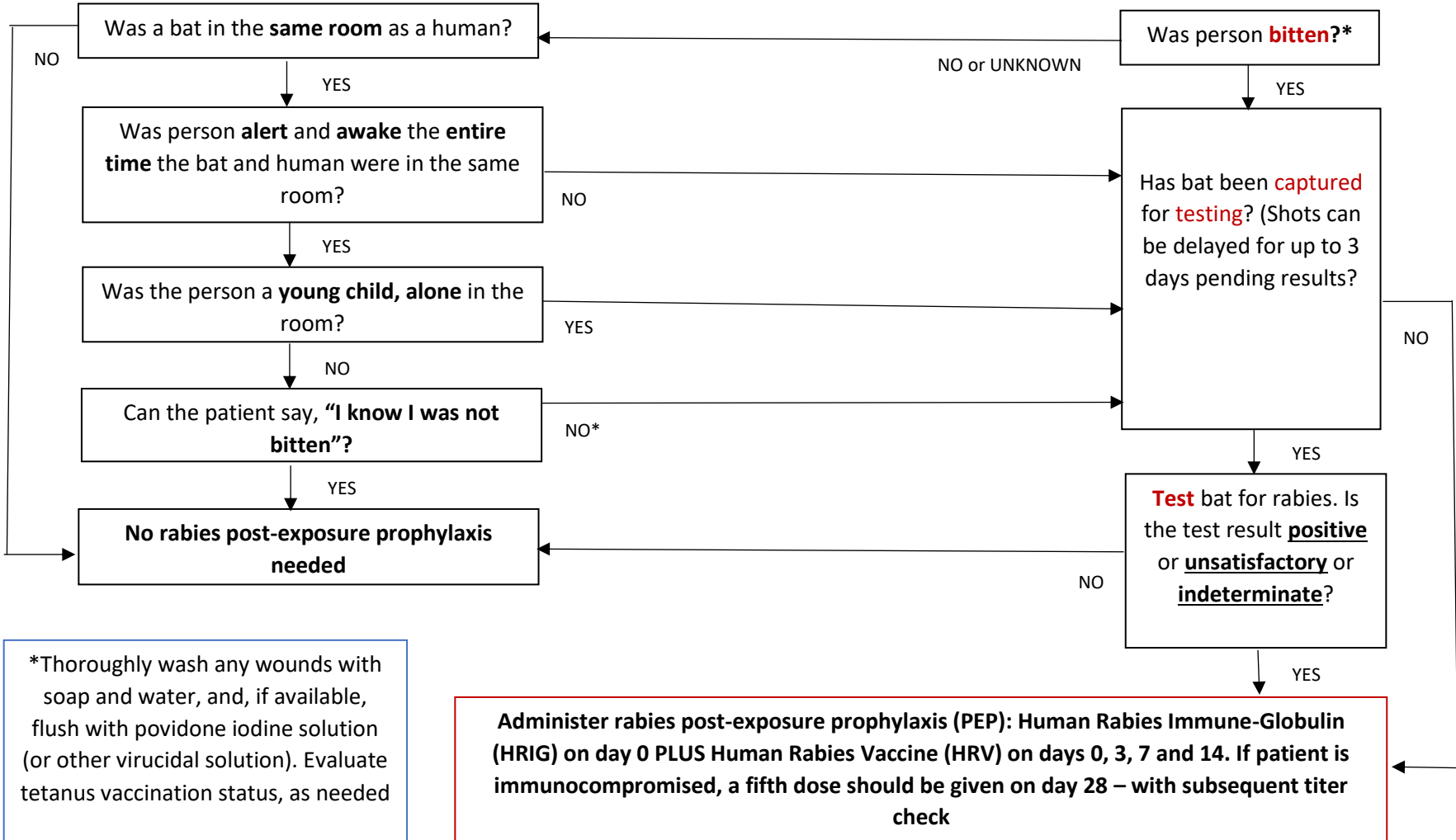


Rabies Exposure Management for Bat-related Incidents



Exposure Risk – Examples of Potential Bat-Human Interactions

Probable Rabies Exposure	Low Probability of Rabies Exposure
Post-exposure Prophylaxis (PEP) Should Be Considered:	Post-exposure Prophylaxis (PEP) Not Generally Recommended:
<ul style="list-style-type: none"> • Unattended young child is found handling bat • Person touches bat without seeing the part of the bat they touched • Bat flies into someone, of any age, and touches bare skin • Adult sees bat fly near child and child reports “it hit me” • Someone, with bare feet, steps on a live or dead bat • Unidentified flying object hits someone and the time of day (dusk or dawn), presence of marks where it hit, and place that it was coming from all support that it was a bat and not a bird or insect • Person awakens to find a bat in the room with them • Adult comes into room where a young child was left alone for a period of time, and live bat is found near child • Bat found on ground near unattended infant, toddler, or a person with sensory or mental impairment • Person puts hand in firewood/brush, feels pain, then sees a bat 	<ul style="list-style-type: none"> • Teenager or adult touches the fur, wings, or legs or a live bat without looking at it • Bat brushes past teenager or adult and they are certain there was no skin contact • Person has contact with a completed dried-up carcass of a bat • Person has touched a tick or object that a bat had contacted • Bat swoops past awake teenager or adult, but the person does not feel the bat touch them • Dead bat found in room with no evidence a child has touched it • Bats are heard or seen in walls or attack of house • Bats are found in other parts of the home, even if bedroom doors were open • Bat guano or other signs of bats are found in sleeping quarters