



**LOCAL HEALTH OFFICER ORDER NO. 9 ISSUED MAY 21, 2020  
"RESTRICTED ACTIVITIES"**

To mitigate the spread of the Coronavirus (COVID-19) in Riley County, Kansas, and pursuant to the authority provided in K.S.A. 65-119, K.S.A. 65-129b, K.S.A. 65-202 and other applicable laws and regulations, this Order No. 9 is issued. In my capacity as the Local Health Officer, I am authorized and required to immediately exercise and maintain supervision over known or suspected cases of any infectious or contagious disease and to issue orders seeing that all such cases are properly handled and that the provisions of the Kansas public health laws regarding isolation, quarantine and disinfection are duly enforced.

As the Local Health Officer appointed by the Board of Health, I am duly authorized to prohibit public gatherings and take other measures necessary for the control of any and all infectious or contagious diseases.

In my capacity as the Riley County Local Health Officer, I have determined this Order No. 9 is necessary to supplement the Governor's order to control the potential spread of coronavirus (COVID-19) within Riley County, Kansas.

**IT IS THEREFORE ORDERED** the following actions shall be taken immediately, and this Order No. 9 supersedes my Orders previously issued, with the exception of any continued prohibitions or restrictions ordered herein.

The Governor's Statewide Stay at Home order was lifted. Actions taken so far have been successful in flattening the epidemic curve to prevent overwhelming our local health care system's ability to care for the number of residents who might develop severe symptoms. All individuals, personnel, organizations and businesses are ordered to comply with the Governor's "Ad Astra - A Plan to Reopen Kansas," Phase 2 (See Attachment A), incorporated herein by reference, with the following local restrictions. At each step of the process, actions must be adapted to account for the latest data and the current overall situation at hand.

With full community cooperation, this proactive public health Order No. 9 may minimize the impact of COVID-19 on our Riley County community.

**Section One: Definitions**

- A. For purposes of this Order No. 9, Social Distancing is defined as follows: maintaining at least six-foot social distancing from every other person present at a location, washing hands with soap and water for at least twenty seconds as frequently as possible (or using hand sanitizer), covering coughs or sneezes (into the sleeve or elbow, not into the hands),

regularly cleaning high-touch surfaces, and not shaking hands.

- B. For the purposes of this Order No. 9 the phrase "public or mass gathering" is defined as any planned or spontaneous, public or private event or convening in which individuals are in one location and are unable to maintain a 6-foot distance between individuals (not including individuals who reside together) with only infrequent or incidental moments of closer proximity.
- C. For purposes of this Order No. 9, Minimum Basic Operations include the following numbered activities provided employees and/or volunteers comply with Social Distancing requirements while carrying out operations.
  - 1. Activities which maintain the value of a business's inventory, ensure security, process payroll and employee benefits, or performing related functions;
  - 2. Activities which allow employees and/or volunteers of the business to continue work remotely from their residences;
  - 3. Activities which allow employees and/or volunteers of the business to continue filling online product orders and processing customer orders remotely.

## **Section Two: Restricted Activities**

**For purposes of this Order No. 9, individuals are ordered to restrict activities according to the Governor's "Ad Astra - A Plan to Reopen Kansas," Phase 2, (See Attachment A). People at high risk of severe illness from COVID-19 and people who are sick are urged to stay in their residence except as necessary to seek medical care.**

### **A. BUSINESS RESTRICTIONS**

Those businesses and other locations closed by the Governor's "Ad Astra - A Plan to Reopen Kansas," Phase 2 (See Attachment A) shall remain closed. Businesses and other locations that are open shall comply with the following additional restrictions:

- 1. Restaurants shall close to the public no later than 10 pm;
- 2. Any businesses or other locations found in non-compliance with the Governor's order, or a source of significant disease outbreak, or as determined and notified by the Local Public Health Officer shall close;
- 3. Closed businesses and locations may perform Minimum Basic Operations as defined in this Order No. 9.

### **B. BUSINESSES AND LOCATIONS**

For purposes of this Order No. 9, if open to the public, all Businesses and Locations are required to take proactive measures to ensure compliance with Required Business Practices as published by the Centers for Disease Control and industry-specific guidance by trade groups. Nothing in this order shall be interpreted to require that any business or location open if they choose not to.

**Section Three.** Pursuant to K.S.A. 65-129b, any sheriff, deputy sheriff or other law enforcement officer of the state or any political subdivision within Riley County, Kansas is hereby ordered to assist in the execution or enforcement of this order.

**Section Four.** This Order is effective at 12:01 a.m. on Friday, May 22, 2020 and shall remain in effect for 14 days, or until amended, superseded, or rescinded.

Any person violating any provision of this order or failing to comply with any of the above requirements shall be fined, upon conviction, up to \$100 for each offense, pursuant to K.S.A. 65-127.

**This Order shall remain in effect from May 22, 2020 and shall remain in effect for 14 days, or until amended, superseded, or rescinded in writing, by the Riley County Local Health Officer or the Board of Riley County Commissioners, sitting as the Board of Health.**

**SO ORDERED, 21st, day of May, 2020.**



Julie Gibbs, Riley County Local Health Officer  
Administrator, Riley County Health Department  
2030 Tecumseh Road  
Manhattan, KS 66502  
Phone: 785-776-4779



For the latest updates and information related to COVID-19, visit the Kansas COVID-19 Response and Recovery website. [covid.ks.gov](https://covid.ks.gov).

---

## Governor Kelly moves Kansas into modified Phase 2

May 19, 2020

Kansas Governor Laura Kelly will sign Executive Order 20-34, which moves Kansas into Phase 2 of “Ad Astra: A Plan to Reopen Kansas.” Phase 2, effective Friday, May 22, 2020, will be modified to include data-driven restrictions necessary to prevent community transmission of COVID-19.

“Throughout the COVID-19 pandemic, all of my administration’s decision-making regarding our reopening efforts has been driven by data – not dates,” Kelly said. “Because of the great work Kansans and businesses have done to keep others safe, data now indicate we are seeing a more consistent decline in hospitalizations, COVID-19-related deaths and a consistent decrease in disease spread. This puts our state in a position to safely move into a modified version of Phase 2.

“I would like to be clear – moving forward in Kansas’ reopening plan does not mean that COVID-19 no longer threatens our communities. Modifying Phase 2 to keep some restrictions allows us to reopen Kansas’ economy as quickly and safely as possible, while exercising necessary caution to keep Kansans healthy.”

- Summer camps (with the exception of licensed childcare facilities).

The Governor will evaluate the state's disease spread, testing rates, death rates, hospitalizations, ability of state and local public health authorities to contain outbreaks and conduct contact tracing, and personal protective equipment availability when determining if the state should move to the next "Phase." Regardless of phase, the State Health Officer retains the authority to impose additional public health interventions in any area that contains an emergent and significant public health risk.

Throughout all phases, Kansans should continue to adhere to hygiene and social distancing protocols, including:

- Washing hands frequently, while avoiding contact with one's face;
- Remaining home when sick or running a fever;
- Following isolation and quarantine orders issued by state or local health officers;
- Wearing a cloth face mask when in public;
- Working remotely, if possible.

Kelly's "*Ad Astra: A Plan to Reopen Kansas*," is available in full at [covid.ks.gov](https://covid.ks.gov), in addition to industry-specific guidance for Kansas businesses.

## ARCHIVES

Select Month 



© 2020 Kansas.gov - Portal Policies - Photo Credits

# Attachment A



# PHASE TWO

BEGINS MAY 22, 2020 AS DIRECTED BY EXECUTIVE ORDER 20-34



## GATHERINGS

- Mass gatherings of no more than **15** individuals allowed.



## INDIVIDUALS

- Masks are strongly encouraged in public settings.
- Maintain 6 foot social distance.



## EMPLOYERS

- Telework is strongly encouraged when possible.
- Any employee exhibiting symptoms should be required to stay home.



## TRAVEL

- Minimize or avoid nonessential travel.
- Follow KDHE travel and quarantine guidelines for travel to high-risk areas.

## X ACTIVITIES & ESTABLISHMENTS

### NOT ALLOWED TO OPEN

- Large entertainment venues with capacity of 2,000+
- Fairs, festivals, and parades
- Summer camps
- Most swimming pools
- Bars and nightclubs excluding already operating curbside and carryout services



### ESTABLISHMENTS

#### ALLOWED TO OPEN

- Casinos (non-tribal) if compliant with guidelines approved by the KDHE.
- Indoor leisure spaces



### EDUCATION, ACTIVITIES, & VENUES

#### ALLOWED TO OPERATE

- Childcare facilities
- Libraries
- Community centers
- Organized sports facilities, tournaments, and practices with some exceptions

## GENERAL PROVISIONS

- **Mass gatherings of more than 15 individuals are prohibited.** Mass gatherings are defined as instances in which individuals are in one location and unable to maintain 6 feet of distance between individuals (including individuals who reside together) with only infrequent or incidental moments of closer proximity.
- **Businesses or functions that are already in operation pursuant to KEFF may continue to function while, if possible, avoiding gatherings of more than 15 individuals where social distancing measures are difficult to maintain.**
- **Local governments retain authority to impose equal or more stringent restrictions during this phase is permitted to do so, except with regards to essential functions in KEFF.**
- **Any federal restrictions imposed and still in effect must be followed.**

## GUIDANCE FOR INDIVIDUALS

- **Masks:** Individuals are encouraged to wear cloth masks in public settings as appropriate.
- **Outdoor Activities:** When in public (e.g., parks, outdoor recreation areas, shopping areas), individuals (not including individuals who reside together) should maintain 6 feet of distance from others with only infrequent or incidental moments of closer proximity.
- **Social Gatherings:** Avoid socializing in person with groups of more than 15 individuals in both indoor and outdoor settings, especially in circumstances that do not allow for a physical distance of 6 feet or more between individuals or groups with only infrequent or incidental moments of closer proximity. (e.g., receptions, trade shows).
- **High-Risk Individuals\*:** High-risk individuals are advised to continue to stay home except for essential needs.
- **Travel:** Minimize nonessential travel and follow KDHE travel and quarantine guidelines for travel to high-risk areas. Essential travel includes travel for urgent and necessary family, medical, and business-related needs as determined by the individual or business.

\*High-risk individuals include those with underlying medical conditions, including, chronic lung disease, asthma, heart conditions, severe obesity, chronic kidney disease, liver disease, or otherwise immunocompromised.



## GUIDANCE FOR EMPLOYERS

- **Telework:** Strongly encouraged for all employees when possible.
- **On-site Operations:** Avoid large gatherings of employees in groups of more than 15 where social distancing protocols cannot be maintained except for infrequent or incidental moments of closer proximity AND continue to phase in employees on-site as possible while maintaining 6 feet of distance between employee workstations.
- **Potentially Sick Employees:** Any employees exhibiting symptoms should be required to stay at home and asked to call their health care provider.

- **Business Travel:** Minimize nonessential travel and follow KDHE travel and quarantine guidelines for travel to high-risk areas. Essential travel includes travel for urgent and necessary family, medical, and business-related needs as determined by the individual or business.
- **Visits to Long-term Care Facilities or Correctional Facilities:** In-person visits to these facilities should be prohibited. Those who must interact with residents must adhere to strict protocols regarding hygiene.





## BUSINESS RESTRICTIONS

All businesses otherwise specified **MAY OPEN IF**:

- ✓ The business can maintain at least 6 feet of distance between consumers (individuals or groups). Restaurants or dining establishments may meet this requirement by using physical barriers sufficient to prevent virus spread between seated customers or groups of seated customers.
- ✓ All fundamental cleaning and public health practices are followed. Businesses should follow industry specific guidelines as provided on [www.kansas.gov](https://www.kansas.gov). Compliance with any additional best practices guidance for each business sector is strongly encouraged.
- ✓ All businesses must avoid any instances in which groups of more than 15 individuals are in one location and are unable to maintain 6 feet of distance with only infrequent or incidental moments of closer proximity. This does not limit the total occupancy of a facility, but requires that facilities limit mass gatherings in areas and instances in which physical distancing cannot be maintained, such as in tables, entrances, lobbies, break rooms, checkout areas, etc.

The following businesses **MAY OPEN IF** they comply with the requirements to the left and **ONLY** to the extent described below:

- Casinos (non-tribal), but only if they comply with uniform guidelines approved by the Kansas Department of Health and Environment.

The following businesses **DO NOT OPEN** open in this phase:

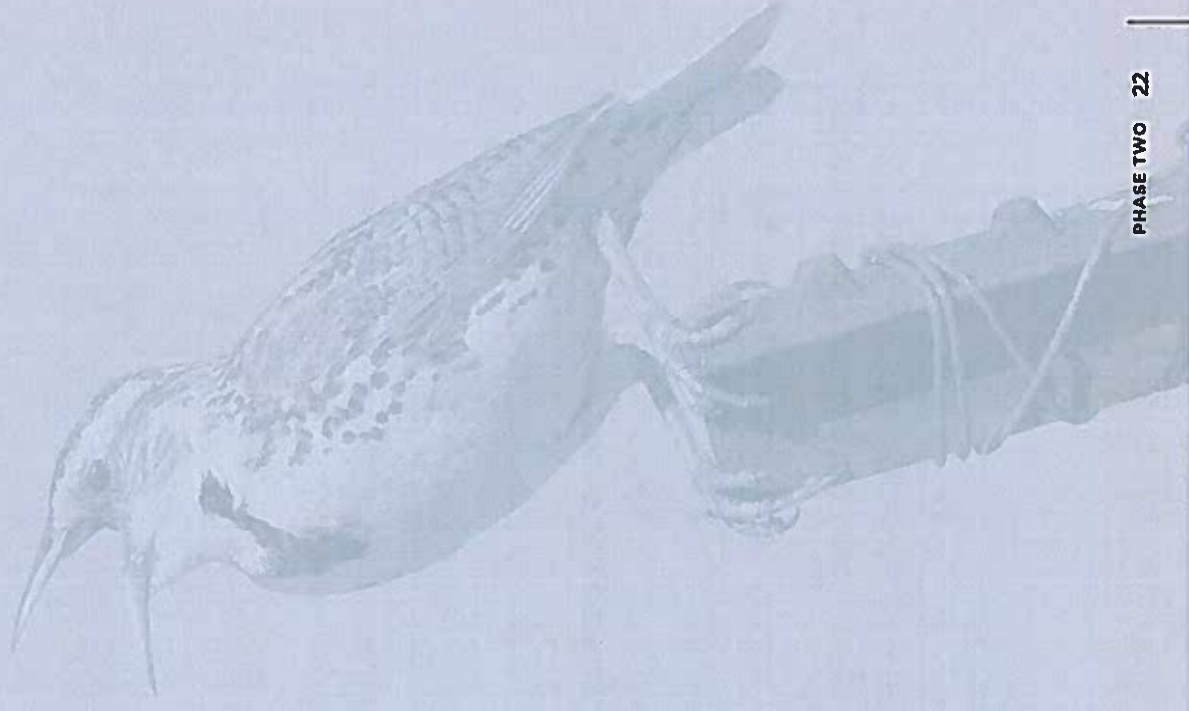
- ✗ Bars and night clubs, excluding already operating curbside and carryout services.

Local governments retain authority to impose equal or more stringent restrictions on businesses during this phase, except as to essential functions in KEFF.



## EDUCATIONAL FACILITIES

- K-12 facilities remain subject to the provisions EO 20-07 regarding school closures, except that up to 15 students, instructors, or staff may be present for normal operations. K-12 facilities should continue to follow the guidelines of the Continuous Learning Plan developed by the Kansas State Department of Education. Districts with facilities in more than one county or city should follow any applicable directives issued by the county or city in which their district office is located.
- Higher education facilities that are closed before May 4th should remain closed for in person learning or events involving groups of more than 15 individuals present at a time.
- Licensed childcare facilities may reopen or continue operations pursuant to state and local regulations.





## ACTIVITIES AND VENUES

All activities and venues not prohibited to the right **MAY OPEN IF**:

- ✓ The venue can maintain at least 6 feet of distance between individuals or groups.
- ✓ ANS fundamental cleaning and public health practices are followed. Compliance with any additional sector specific best practices guidance is strongly encouraged.
- ✓ ANS avoid any instances in which more than 15 individuals are in one location and are unable to maintain 6 feet of distance with only infrequent or incidental moments of closer proximity. This does not limit the total occupancy of a facility, but requires that facilities limit mass gatherings in areas and instances in which physical distancing cannot be maintained, such as in entrances, lobbies, locker rooms, etc.

The following activities and venues **MAY OPEN IF** they comply with the requirements to the above and **ONLY** to the extent described below:

- Recreational, youth, or other non-professional organized sports facilities, sports tournaments, sports games, and sports practices may open or occur if they follow guidelines established by the Kansas Recreation & Park Association and approved by the Department of Health and Environment and posted on [covid.ks.gov](https://www.covid.ks.gov).

The following activities and venues **DO NOT OPEN** in this phase:

- ✗ Outdoor and indoor large entertainment venues with capacity of 2,000 or more
- ✗ Fairs, festivals, carnivals, and parades
- ✗ Summer camps
- ✗ Swimming pools, other than single-family backyard pools or pools being used only for physical therapy or first responder training.

Local governments retain authority to impose any equal or additional restrictions on educational facilities, activities, and venues, except as to essential functions in KEFF.





