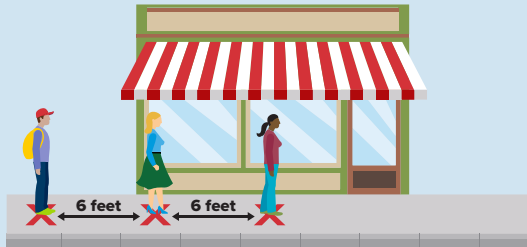


COVID-19 GUIDANCE

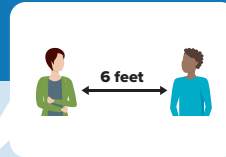
Best Business Practices



OUTSIDE THE STORE



Businesses with a legal occupant load over 50 must have controls in place to meet social distancing requirements. Post occupancy signs at the front door.

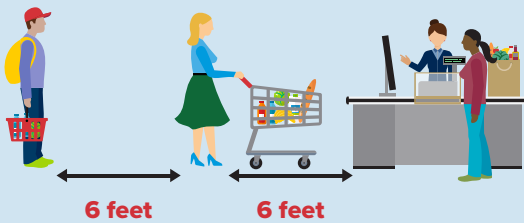


Limit the number of customers allowed in the store. Staff an employee at the door - as one customer leaves, another enters.

Place carts & baskets at the front of the store. Clean prior to use or provide a means for customers to sanitize on their own.



INSIDE THE STORE

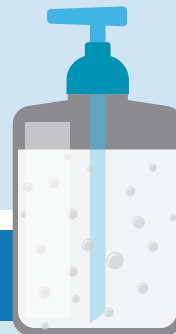


Provide shielding between customers & employees. Post social distancing markers & floor signs in key areas throughout the store. Limit lines; urge customers to maintain distance.

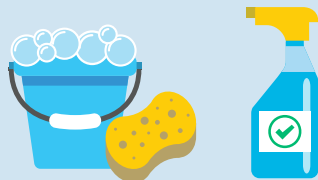
Provide alcohol-based hand sanitizer throughout the store & have available at all registers.



Routinely clean the store. Have soap & water available in restroom. Encourage frequent hand washing.



DAILY ACTION ITEMS



Routinely clean stores. Increase spot cleaning of high-touch items & high traffic areas. Use CDC-approved disinfectants.

Make alcohol-based sanitizer available to all customers & visitors.



Require employees who are sick to stay home.

Visit www.rileycountyks.gov/coronavirus for more information.